

### SERVICES & Number served:

Head Start -398,  
Early  
Head Start -185,  
Childcare 24,  
TANF Preschool-  
46, Preschool  
Academy-41

**Our Vision:**  
Families, Staff and  
Communities, together  
we grow children.

Early  
Intervention  
and  
Developmental  
Preschool-232

**Total # of Families  
Served: EHS-153  
HS -371**

**% of Eligible  
Children  
Served  
HS – 67%  
EHS- 18%**



### FOR OVER 54 YEARS

WCFD has been serving the children in  
**GOSHEN, PLATTE, CONVERSE,  
NIOBRARA, NATRONA, CROOK, WESTON, &  
CAMPBELL COUNTIES**

**Our Mission:** We make a positive difference for young  
children, families, and communities through  
partnerships and comprehensive early childhood  
developmental services.



WCFD EMPLOYS OVER **200** PROFESSIONALS

**VOLUNTEERS Make a  
Difference  
Our Program was  
Supported by 898  
Community  
Volunteers & 706  
parent Volunteers  
Valued at  
\$2,221,925.88 in  
2018 School year**



### About US:

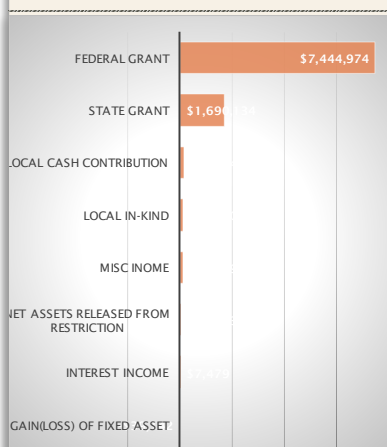
Wyoming Child & Family began administering programs for children and families in eastern Wyoming in 1965. Through many opportunities for growth and expansion, services are currently extended to approximately 700 children and their families in eight counties. Our program funding includes Head Start, Early Head Start, TANF Preschool (Discovery Preschool), Childcare and Early Intervention and Developmental Preschool services for children birth through five. Our service area extends to eight counties covering most of the eastern side of Wyoming. Wyoming Child and Family has centers located in Casper, Glenrock, Douglas, Wheatland, Lusk, Guernsey, Gillette, Newcastle, and Torrington. Services are provided through a variety of home based and center-based programs.

We enjoy an excellent reputation for providing high quality early childhood education, designed to meet individual and community needs. Our parents and staff partner together to provide quality services and education for children and families of our program. Improving school readiness, engaging families in their child's education and partnering with others remain important priorities. We continue to invest in staff development and improving the quality of interactions to support positive child outcomes. Our data affirms that our results meet and, in many instances exceed, state and national outcome measures.

### Funding Sources

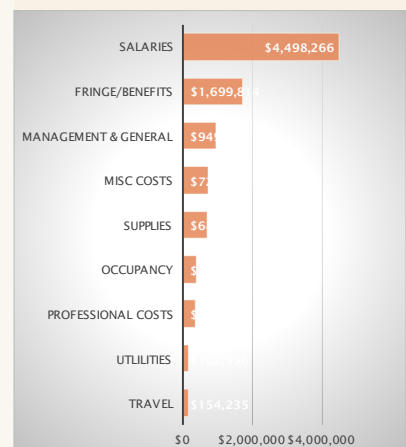
#### REVENUE SUMMARY

Total Annual: \$9,536,771.00



#### EXPENSES SUMMARY

Total Annual: \$9,599,958.00



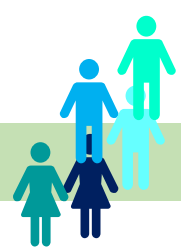
Wyoming Child and Family Development, Inc. has a comprehensive external financial audit completed annually. The results of this most recent audit provided an unmodified opinion. The results of the audit disclosed no instances of noncompliance or other matters that are required to be reported under Government Auditing Standards.

Projected Budget	Annual
Federal Grant	\$8,018,236.00
State Grant	\$1,426,351.00
Local In-kind	\$125,000.00
Local Cash Contribution	\$150,000.00
Interest Income	\$7,500.00
Misc Inome	\$118,000.00
<b>Total</b>	<b>\$9,845,087.00</b>

**Governing Body**  
**2018-2019 Board of Directors**  
 Daniel Sisson, Chairperson  
 Mark Knickerbocker, Vice-Chairperson  
 Harla Gilbreath, Secretary  
 Judy Mac, Treasurer  
 Twila Barnette  
 Herbert Doby  
 Barbara Frederick  
 Marion Smith  
 Catherine (Kate) Steinbock  
 Rebecca Steinhoff  
 James (Jim) Cathcart  
 Dee Wood  
 Elizabeth Roth  
 Cindy Griebe

**Management Team -**  
Program Design and Management  
**Danielle Wondercheck**, Executive Director/Special Services Director  
**Marian Moats**, Head Start/Early Head Start/TANF Preschool Director  
**Mary Kugler**, Assistant Director, ERSEA/Area Coordinator  
**Gina Olson**, Deputy Assistant Director, Family Services Coordinator/Area Coordinator  
**Jodie Palmer**, Special Services/Mental Health Coordinator  
**Melissa Miller**, Health/Safety/Nutrition/Transportation/Facilities Coordinator  
**Lacy Judkins**, Early Head Start/Area Coordinator  
**Kathy Nelson**, Education/Area Coordinator

**2018-2019 Policy Council Members**  
 Cindy Griebe, Chairperson  
 John Smallbone, Vice-Chairperson  
 Shantelle Merchen, Secretary  
 Amber Boutwell  
 Ashley Wood  
 Brandy Rose  
 Brittany Ford  
 Desiree Murray  
 Ericha McCoy  
 Holly Chapman  
 Jaquelyn Miller  
 Kyndra Smith  
 Phathom Holt  
 Sarah Stoppel



**\*Children are Healthier:**  
 EHS completed 90% of Well Child Exams; 76% of Dental Exams and 93% of children were up-to date on Dental Exam  
 HS completed 93% of Well Child Exams; 63% of Dental Exams and 85% of children were up-to-date on Dental Exams.

*This institution is an equal opportunity provider.*

ON AVERAGE WCFD PROVIDES  
**1,000 FREE**  
 DEVELOPMENTAL SCREENINGS TO CHILDREN IN OUR DD COMMUNITIES EACH YEAR  
 (Screen for Success)

**Parent Engagement activities:**  
 Parent engagement events; local parent groups; Policy Council

**Efforts to support School Readiness:**  
 Ongoing communication with families to support each child's learning at home  
 Specialized supports for children with special needs, behavioral challenges, and learning English  
 Supporting families to establish consistent school attendance for children  
 Snacks, meals, and physical activity to encourage lifelong healthy choices  
 Family engagement opportunities to help build parents' confidence for being involved in their child's education and advocating for their child  
 Helping families recognize the link between overall health and school readiness by encouraging preventative medical and dental exams  
 Supporting families through transitions to the next educational setting  
 Memorandum's of Understanding for transitions with school districts  
 Using assessment data from local school districts to inform continuous improvement  
 Establishing strong relationships with children's receiving schools  
 Collaborative partnerships that support school readiness for all community children  
 Encouraging children to investigate, explore and engage in purposeful play  
 Individualized experiences and instruction for each child  
 Ongoing observations and assessment to inform intentional teaching

**100% Parents meet with teachers**

*All Wyoming Child and Family Development sites are licensed by the State of Wyoming Department of Family Service, follow National Association for the Education of Young Children (NAEYC) Standards, and participate in the USDA's Child and Adult Care Food Program (CACFP).*