

### Services & Number served:

Head Start -398,  
Early  
Head Start -165,  
Childcare 24,  
TANF  
Preschool-44  
Preschool  
Academy-34

**Avg. Monthly Enrollment:**  
HS:99.7  
EHS:99.2%

**Our Vision:**  
Families, Staff and  
Communities, together  
we grow children.

Early  
Intervention  
and  
Developmental  
Preschool-185

**Total # of Families Served:**  
EHS-153  
HS -371

**% Eligible children served**  
57% of HS  
35% of EHS



### FOR OVER 55 YEARS

WCFD has been serving the children in  
**GOSHEN, PLATTE, CONVERSE,  
NIOBRARA, NATRONA, CROOK, WESTON, &  
CAMPBELL COUNTIES**

**Our Mission:** We make a positive difference for young children, families, and communities through partnerships and comprehensive early childhood developmental services.



## WCFD EMPLOYS OVER 200 PROFESSIONALS

**VOLUNTEERS Make a Difference**  
**Our Program was Supported by 632 Community Volunteers & 573 parent Volunteers Valued at \$2,450,496.77 in 2019 School year**



### ABOUT US:

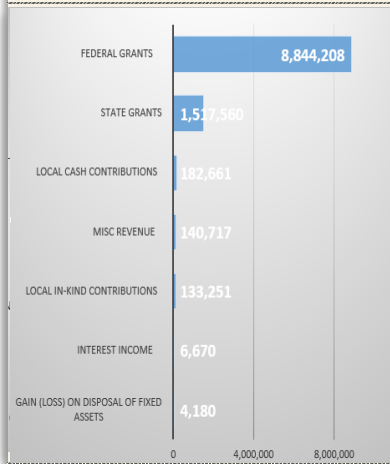
Despite the impacts of a COVID-19 this year, Wyoming Child & Family Development (WCFD) has continued to focus on its mission to make a positive difference for young children, families, and communities through partnerships and comprehensive early childhood developmental services. WCFD began administering programs for children and families in eastern Wyoming in 1965. Approximately 700 children birth through five, their families, and expectant mothers benefit from participation in our programs. We enjoy an excellent reputation for providing high quality early childhood education, designed to meet individual and community needs. Our program funding includes Head Start, Early Head Start, TANF Preschool (Discovery Preschool), Childcare, and Early Intervention and Developmental Preschool services in eight counties covering most of the eastern side of Wyoming. WCFD has centers located in Campbell, Converse, Crook, Goshen, Natrona, Niobrara, Platte, and Weston counties.

A variety of comprehensive home based and center-based programs help support each child's education, health, nutrition, social and emotional well-being, and mental health. Improving school readiness, engaging families in their child's education, and collaborating with others remain important priorities. We continue to invest in staff development and improving the quality of interactions to support positive child outcomes. Our data affirms that our results meet, and in many instances exceed, state and national outcome measures.

### Funding Sources

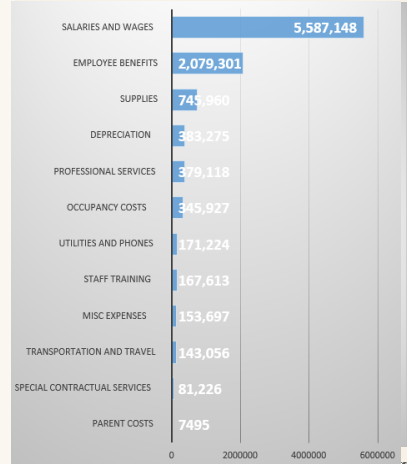
#### REVENUE SUMMARY

Total Annual: \$10,829,247



#### EXPENSES SUMMARY

Total Annual: \$10,245,040



Wyoming Child and Family Development, Inc. has a comprehensive external financial audit completed annually. The results of this most recent audit provided an unmodified opinion. The results of the audit disclosed no instances of noncompliance or other matters that are required to be reported under Government Auditing Standards.

Projected Budget	Annual
Federal Grant	\$8,844,208.00
State Grant	\$1,517,560.00
Local In-kind	\$133,251
Local Cash Contribution	\$182,661.00
Interest Income	\$6,670.00
Misc Inome	\$140,717300
Total	\$10,829,247.00

**Governing Body**  
**2019-2020 Board of Directors**  
Daniel Sisson, Chairperson  
Elizabeth Roth, Vice-Chairperson  
Barbara Frederick, Secretary  
Harla Gilbreath, Treasurer  
Twila Barnette  
Herbert Doby  
Catherine (Kate) Steinbock  
James (Jim) Cathcart  
Dee Wood  
Wendy Gauntner

Tawni Haworth, Policy Council Liaison

**Management Team –**  
**Program Design and Management**  
**Danielle Wondercheck**, Executive Director/Special Services Director  
**Marian Moats**, Head Start/Early Head Start/TANF Preschool Director  
**Mary Kugler**, Assistant Director, ERSEA/Area Coordinator  
**Gina Olson**, Deputy Assistant Director, Family Services Coordinator/Area Coordinator  
**Jodie Palmer**, Special Services/Mental Health Coordinator  
**Melissa Miller**, Health/Safety/Nutrition/Transportation/Facilities Coordinator  
**Lacy Judkins**, Early Head Start/Area Coordinator  
**Kathy Nelson**, Education/Area Coordinator

**2019 -2020 Policy Council Members**  
Tawni Haworth, Chairperson  
Heather Goddard, Vice-Chairperson  
Cindy Griebel, Secretary  
Wendy Fare  
John Smallbone  
Mairia Mclaughlin  
Sarah Stoppel  
Anna Kukuchka  
Katie Miller  
Amy Jensen  
Leah Jones  
Robretta Campbell  
Jamee Lashmett  
Andrew Kreischel  
Amanda Enyeart  
Andrew Kreischel

*This institution is an equal opportunity provider.*

ON AVERAGE WCFD PROVIDES

**1,000 FREE**

DEVELOPMENTAL SCREENINGS TO CHILDREN IN OUR DD COMMUNITIES EACH YEAR  
(Screen for Success)

Parent Engagement activities:  
Parent engagement events; local parent groups; Policy Council

- Increased efforts to support School Readiness during the global pandemic:
- Consistent communication with families to support each child’s learning at home and their family well-being
  - Specialized supports put in place for children with special needs, behavioral challenges, those learning English
  - Supporting families to establish and maintain consistent school attendance for children
  - Continued provision of snacks, meals, and physical activity to encourage lifelong healthy choices, through direct services and connections to community resources
  - Ongoing family engagement opportunities to help build parents’ confidence for being involved in their child’s education and advocating for their child
  - Helping families recognize the link between overall health and school readiness, by encouraging preventative medical and dental exams
  - Supporting families through transitions – daily, life, and to the next educational setting
  - Establishing strong relationships, Memorandums of Understanding, and data sharing with receiving schools in our service area
  - Encouraging children to investigate, explore and engage in purposeful play
  - Providing individualized experiences and instruction for each child
  - Ongoing observations and assessment data to inform intentional teaching

**Children are Healthier:**

EHS completed 92% of well child exams; 76% of dental exams and 93% of children were up-to date on dental exam  
HS completed 68% of well child exams

and 92% of children were up-to-date on dental exams.

Staying up to date on preventive health was especially challenging with COVID-19. Many health providers postponed or cancelled preventive health appointments.

*All Wyoming Child and Family Development sites are licensed by the State of Wyoming Department of Family Service, follow National Association for the Education of Young Children (NAEYC) Standards, and participate in the USDA’s Child and Adult Care Food Program (CACFP).*