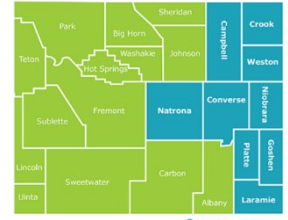


# ANNUAL REPORT 2022-2023



## Our Mission:

We make a positive difference for young children, families, and communities through partnerships and comprehensive early childhood developmental services.



**ABOUT US 2022-2023:** In 1965 Wyoming Child & Family Development (WCFD) began providing services for children and families in eastern Wyoming. Children birth through five, their families, and expectant mothers benefit from participation in our programs. We have a reputation for providing high quality early childhood education designed to meet individual and community needs.

Program funding in 2022-2023 included Head Start, Early Head Start, Discovery Preschool (TANF), Childcare, Early Intervention and Developmental Preschool services, and paid Preschool in nine eastern Wyoming counties - approximately 29,000 square miles.

Improving school readiness, engaging families in their child’s education, collaborating with others, and improving family well-being remain important priorities. Our services help support each child’s education, health, nutrition, social and emotional well-being, and mental health. We invest in staff development and improving the quality of interactions to support positive child outcomes. Our data affirms that our results meet, and often exceed, state and national outcome measures.

### New this year in response to community need:

- 1 full year preschool classroom at our Mills location
- 2 full day preschool classrooms in Glenrock and Casper

### Program Participants

Early Head Start	216
Head Start	475
Discovery Preschool	35
Developmental Disabilities	195
Preschool Academy	27
PeeWee Academy	5
Pregnant Women	11
<i>Cumulative enrollment</i>	<i>964</i>

### Percent of Eligible Children Served

EHS (Birth -3 Years)	14%
HS (3 – 5 years)	43%

### Families

Early Head Start (EHS)	197
Head Start (HS)	460
Other	192

### Children are Healthier

Preventive health care supports school readiness.

### Completed Exams

	Well Child	Dental
EHS	180	124
HS	337	328

### Developmental Disabilities

Converse, Goshen, Niobrara, and Platte Counties

Children Served	195
Screenings	680



## Efforts to Support School Readiness

- ❖ Experiences and instruction tailored to each child’s strengths and needs.
- ❖ Child engagement in purposeful play, to investigate, explore and learn.
- ❖ Ongoing observation and assessment to inform intentional teaching.
- ❖ Supporting emotional, behavioral, and cognitive self-regulation.
- ❖ Nutritious meals and snacks encourage lifelong healthy choices.
- ❖ Individualized Mental Health Supports for children, families, and staff.
- ❖ Communication with families supports learning at home.
- ❖ Family well-being support.
- ❖ Specialized support for children with special needs or behavioral challenges.
- ❖ Specialized support for children learning English.
- ❖ Building parent confidence to be involved in their child’s education.
- ❖ Building family skills for advocating for their child.
- ❖ Supporting families through daily, life, and education setting transitions.
- ❖ Establishing strong relationships and sharing data with school districts.

**82%** of Early Head Start and Head Start families have at least 1 parent employed or going to school thanks to nurturing, safe, high quality early education for their children.

### Family Goals Support Family Well Being



### Partner contributions over \$5,000



- Natrona Collective Health Trust
- Converse County Commissioners
- City of Douglas
- Town of Guernsey
- Match Play Classic

### Parent Engagement Activities

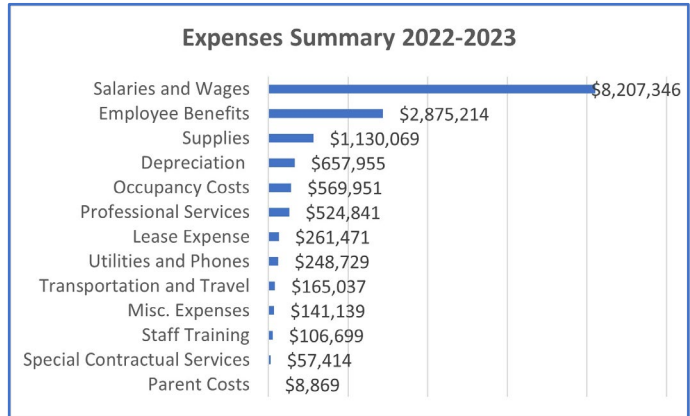
- FAMILY ENGAGEMENT EVENTS
- LOCAL FAMILY COMMITTEES
- POLICY COUNCIL

## FUNDING

Wyoming Child and Family Development, Inc. has a comprehensive external financial audit completed annually. The results of this most recent audit provided an unmodified opinion. There were no instances of noncompliance or other matters that are required to be reported under Government Auditing Standards.



**Total Revenue: \$14,751,379**



**Total Expenses: \$14,954,734**

**Family, Staff and  
Community:  
Together we grow  
children**

**915** Families  
**255** Employees  
**1255** Volunteers

### Projected Budget 2023-2024

	Annual
Federal Grants	\$ 13,182,568
State Grants	\$ 1,750,000
Local Cash Contributions	\$ 175,000
Interest Income	\$ 6,000
Misc. Income	\$ 40,000
<b>Total</b>	<b>\$ 15,153,568</b>

## Shared Leadership & Governance

### Governing Body

- Daniel Sisson, Chairperson
- Elizabeth Roth, Vice Chairperson
- Barbara Frederick, Secretary
- Harla Gilbreath, Treasurer
- Twila Barnette
- Debbie Brown
- Jacob Bustos
- Kari Dickson
- Herbert Doby
- Shelly Hagen
- Noamie Niemitalo
- Laura Richins
- Beth Storer
- Janea Miller- Policy Council Liaison

### Policy Council

- Janae Miller, Chairperson
- Katie Faria, Vice Chairperson
- Jessica Stull, Secretary
- Brandy Anderson
- Alexandra Bowen
- Robretta Campbell
- Anne Carlsen
- Ashley Esquibel
- Jenna Firkins
- Malissa Hager
- Felicity Hernandez
- Shianne Endelman Holmes
- Katie Mills
- Emily Pursel

### Program Design and Management

- Danielle Wondercheck, Executive Director
- Marian Moats, Director of Program Services
- Brooke Miller, CFO/Director of Business Operations
- Mary Kugler Director of ERSEA
- Gina Olson, Director of Family Services
- Melissa Walker, Director of Health and Safety
- Lacy Judkins, Director of Infant and Toddler Instruction
- Kathy Nelson, Director of Preschool Instruction

WCFD sites are licensed by the State of Wyoming Department of Family Service. We follow National Association for the Education of Young Children (NAEYC) Standards. We take part in the USDA's Child and Adult Care Food Program (CACFP). Most recent audits: During the 2022-2023 program year, WCFD passed a CACFP audit with no findings. The Office of Head Start conducted a Focus Area 2 Federal Review in April 2022. Results indicate WCFD was compliant in all areas. The most recent single audit of WCFD financials ending June 30, 2023 resulted in an unmodified opinion with no findings. WCFD qualifies as a low-risk auditee.

This institution is an equal opportunity provider.

